

MV Hosei Maru (+1945)

= ex
POSEIDON
(NIT)

Details

general

nationality: [japanese](#)
purpose: transport
type: [tanker](#)
propulsion: [motor vessel](#)
date built: [1914](#)

details

weight (tons): 696 grt
dimensions: 58,46 × 9,27 × 3,71 m
engine: 4cyl diesel engine
power: 360 h.p.
speed: 8 knots

about the loss

cause lost: [gunfire - shelled](#)
date lost: [10/04/1945](#) [dd/mm/yyyy]
casualties:

about people

builder:  [Smith's Dock Co. Ltd. - T. & W. Smith](#)
owner:  [Japanese Government](#)

captain:

about the wreck

depth:
orientation:
noted:

depth:
orientation:
protected:
war grave:

updates

entered by: [Allen Tony](#)
entered: 04/08/2008
last update: [Vleggeert Nico](#)
last update: 03/09/2009

Position

[Letpens Jan](#) 01/04/2009

latitude: [hydro_member](#)
longitude: [hydro_member](#)
AIS: [check AIS](#)
mark: [add_position_to_my_marks](#)
dist. homeport: [dist_homeport](#)
ref. used: [Cressman R. J., Official Chronology of the U.S. Navy in WWII](#)

show neighbour. wrecks: [members_only](#)

insert new position

The Wreck today

insert wrecksite info

Pictures

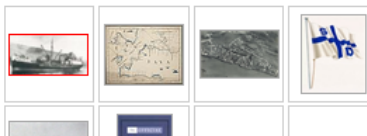


[Vleggeert Nico](#) 03/09/2009

Hosei Maru under her former name Poseidon

copyrights: [Unknown - onbekend - inconnu](#)

ref. used: [1] [cnooks.nl](#)
[2] [Kooos Loos](#)



insert new picture

History

[Letpens Jan](#) 01/04/2009

On 10th April 1945, the Dutch submarine O-19 sinks Japanese merchant tanker Hosei Maru so the enemy ship proceeds from Balikpapan to Batavia, 05°30' S, 106°40' E.

ref. used: [Cressman R. J., Official Chronology of the U.S. Navy in WWII](#)


[Allen Tony](#) 04/08/2008

Hosei Maru was a Japanese Tanker of 696 tons. She was formerly the Dutch Tanker POSEIDON which was scuttled off off Tjilatjap on the 6th March 1942 to avoid capture by the Japanese. Salvaged by IJN and renamed Hosei Maru. She was sunk by gunfire from RNN submarine O-19 in Strait Sunda on the 10th April 1945.

ref. used: [Allied Merchant Ship Losses in the Pacific & SE Asia](#)

insert new history

About Builder(s)

 [Smith's Dock Co. Ltd. - T. & W. Smith](#)
Smiths Dock Company of High Docks, South Shields, are often referred to simply as Smith's Dock, was a British shipbuilding company that became associated with South Bank in Middlesbrough on the River Tees in Northeast England, after opening an operation there in 1907. Smiths Dock are perhaps most famous for preparing the design of the Flower cla...

[read more](#)



LAT: 1°58,9XXS

LON: 122°46,4XXE

